

Herne CE Infant and Nursery School



‘Learning, loving and growing together in God’s love’



‘Pupils thrive at this school’ Ofsted 2021

Welcome to Herne CE Infant and Nursery School



**Welcome from Head of School
Lucy St John and Executive
Headteacher Liz Thomas-Friend**

We are proud to welcome you to Herne Infant and Nursery School.

We are located in the heart of Herne village and work closely with our community.

Herne is an exciting place to be, where learning comes to life and children thrive.

Our Herne family is a happy and creative one with children's enjoyment, wellbeing and development at our core.

We want all children to succeed and know that the foundations to life long learning start here.



Our Aims and Values

'Let all that we do, be done in love'
(1 Corinthians 16:14).

Our culture and ethos are built upon our five Christian values of love, respect, forgiveness, trust and honesty.

These values underpin our actions and behaviours to make this a happy place to learn.

Our children are equipped with many life skills and attributes to enable lifelong learning.

Qualities such as perseverance, problem solving and resilience help to prepare them for their next steps.

Celebrating Childhood

Children deserve to enjoy their childhood. Through developing excellent relationships with parents we are able to work in partnership to support each child.

We ensure we tailor our curriculum to meet the needs of each individual. Our school is a bright, vibrant and welcoming place where children are valued and their voice is heard.

Learning opportunities are rich, using our extensive grounds and the wider community.

Our incredible staff are experts in Early Years education and understand the importance of a child centred curriculum.

'Staff at Herne Infant School know my child. She is in safe and loving hands'

Our Church School Vision Statement

Herne CE Infant and Nursery School is rooted and growing in God's love, our foundational school value.

We believe love is the most important thing we can show each other and therefore seek to 'let all that we do, be done in love' (1 Corinthians 16:14).

Our school is a safe and nurturing place, like a well-established tree, the largest of all garden plants.

Our artwork shows love is in our roots and that as our tree grows, our other school values of forgiveness, honesty, trust and respect develop and flourish too.

Our community feels safe and welcome to come and make a nest in our branches, receiving the love, care and support they need.

We see our whole school community as tiny mustard seeds that are planted in good soil and nurtured, which will in turn grow into their own trees, displaying our school values.

Our prayer is that the branches of those trees will in turn become safe spaces to offer support to others who need it.

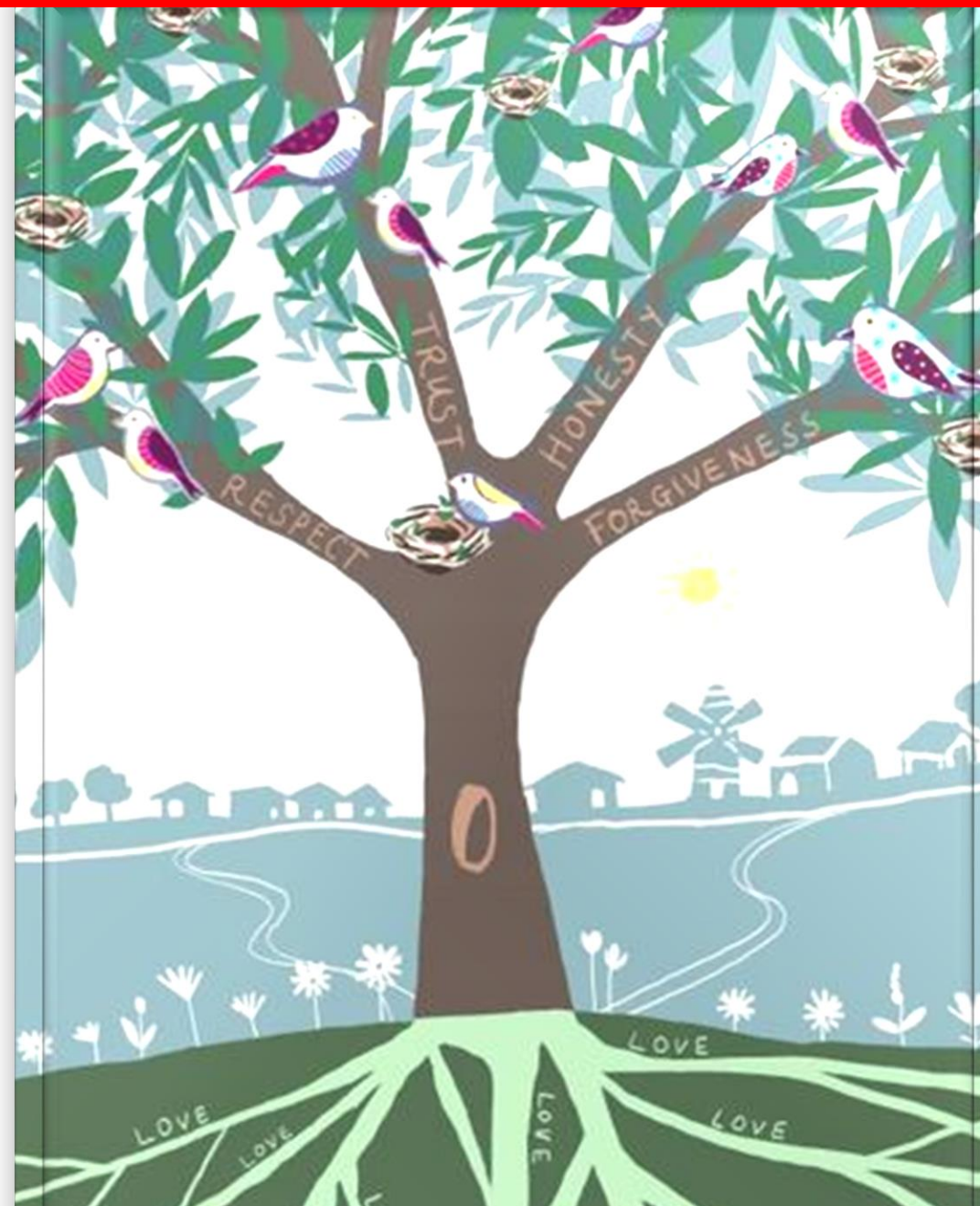
We are also planting tiny mustard seeds of faith into our school community, helping all to ask questions and make sense of the changing world around them.

We celebrate every member of our community and treasure the contributions each person can make.

We take the time to know each individual child, their needs, personalities, interests and families and through this, ensure all pupils, whatever their background or ability, can flourish.

We promote good health and emotional wellbeing and support children and their families in order to give them the best possible learning experiences at the start of their learning journey.

We recognise that learning is life-long and believe that by getting the foundations right, we provide everyone with the opportunity to discover life in all its fullness which Jesus offers us.



'My son loves worship. He sings songs at home and tells me about how the Bible stories relate to him'

Learning environments



Our learning environment is colourful, inspiring, inviting and stimulating. Walls are adorned with children's work and prompts to aid learning.

The outdoor environment is as important as the indoor classroom. Each class has their own fully resourced garden area which allows for the flow of learning.

We recognise the importance of children being able to access resources independently and make choices and decisions. We ensure equipment is clearly labelled so that children can find and use them.

Every class has cosy corners, book corners and role play areas. It is essential that children have different places to play and learn.

We have three classes in each year group. Each class is led by a fully qualified teacher and a full time teaching assistant. The teams plan together to ensure consistency of learning but each class has their own unique personality.

Our classes are named after British animals and each class has their own animal mascot. Our environments are very inclusive and ensure all children can access learning.



'This school is fantastic and I love that we are one big community family' Revd Cat, St Martin's Church

Outdoor learning and our community

Outdoor Learning

Children have access to outdoor learning all year round. They keep a pair of Wellies in school and we have class sets of all weather coats and trousers.

The Hive

The Hive is our outdoor classroom. Here children make dens, learn fire safety, climb trees, camouflage themselves, problem solve and much more.

The Wildlife Area

This is a multi sensory space which the grass grows long, children grow plants and look for Minibeast. It is a quiet reflective area and a space to explore.

The Playground

Children need to develop their gross motor skills and core strength. Our playground is equipped with apparatus that children can climb, swing and crawl on.

Class Gardens

Children access their learning at all times of the day in all areas of their class space. Staff use their outdoor environments to ensure a continuation of learning and develop children's curiosity.



We take our children out into our local community and further afield.

Often we will use public transport such as the local bus or train to enrich the children's experiences.

Typical local days out include

- St. Martin's Church
- Strode Park
- Curtis Woods
- Herne Bay
- Reculver
- Fields surrounding School
- Cherry Orchard Playground

Outings further afield have included

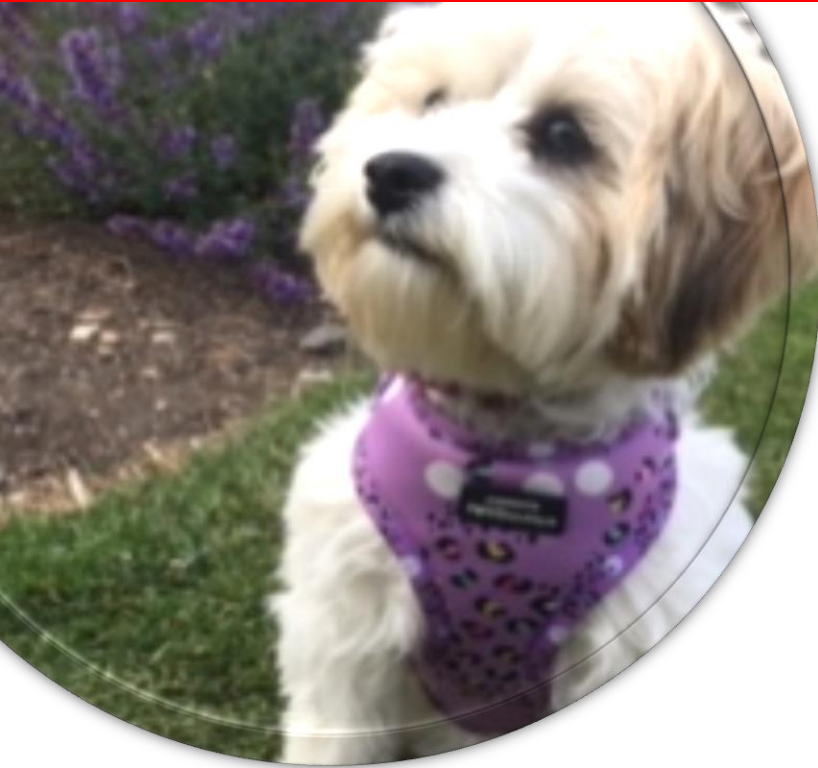
- Wildwood
- Canterbury
- The Royal Albert Hall
- Canterbury Cathedral
- Canterbury Museums
- Margate Beach

Swimming

Living so close to the sea we believe that swimming and water confidence is an essential life skill. We pay for every child in school to access swimming every year.

'The staff were so enthusiastic about outdoor learning. I can see why the children enjoy it so much'
Outdoor Survival Trainer

Nurture, Wellbeing and Enrichment



Pixie

Pixie is our school dog. She is a Cavapoochon with a very loving personality. Pixie attends school 3 days a week and often starts the day greeting everyone on the playground. She is great for wellbeing and is always there if children need to sit quietly, stroke her and have some TLC. Pixie likes to visit the classrooms and see what the children are learning. She also enjoys local school trips where she can walk with the children.

Wellbeing Womble

Our Wellbeing Womble is a highly qualified Teaching Assistant who is dedicated to the wellbeing and nurture of children. The Wellbeing Womble works with groups and individuals to enable children to understand their feelings and work through challenges they may be facing. She bases herself in The Nest (our wellbeing room) which she shares with our Play Therapist.



Enrichment

We ensure that children's learning is tangible, hands on and has a real life purpose. Visitors and bought in activities enhance the experiences and learning opportunities of our children. We have enjoyed visitors and experiences such as Circus Skills, Scooter Day, Tennis, Space Dome, theatre shows, Olympians and a travelling orchestra.



‘One of my child’s favourite things is to say good morning to Pixie and give her a stroke. It starts his day well.’

The School Day



School Hours

School hours are **8.40am-3.10pm**

Our gate is open for drop off and pick up between 8.30am-8.45am and 3.00pm-3.15pm

Wraparound Care

West Faversham Community Association run a successful wraparound provision on our school site schoolclub@invicta-cl.org

Herne Junior School also provides before and after school wraparound care for our children. Please contact providers directly for more information.

School Meals

Our lunchtime meals are cooked on site by our Chartwells catering team led by Mrs Chalk. She offers a daily choice of delicious, nutritious and freshly made meals and can cater for medical dietary needs. Children independently select vegetables and fruit from the salad bar and fruit bar. Our wonderful midday staff ensure children have an enjoyable experience at lunchtime while learning key life skills such as taking turns and using a knife and fork.

School dinners are free for all infant age children as part of a government funded initiative.

Snack and Drink

All Children receive a Herne water bottle when they join Year R. Water is great for hydration and learning therefore we encourage children to drink throughout the day.

All infant children are provided with a free piece of fresh fruit every day and a glass of milk.

Please note: We are a nut free school and products containing nuts, such as peanut butter and Nutella, should not be brought into school.



'I love volunteering at the Infants, no two days are the same which means people have energy and enthusiasm'

Inclusion – Everyone is welcome

Unique Learning Journeys

We believe that every child is special and unique. Every child has their own learning journey at a pace to suit them and in a style that helps them to succeed.

We pride ourselves on knowing our children, their starting points, strengths and challenges. Staff use this knowledge effectively to create a curriculum where every child makes progress and can achieve.

We identify challenges early on and work in partnership with you to ensure your child is given appropriate support.

We work closely with outside agencies, for example Speech and Language Therapists, to enable a team approach to meeting individual's needs.

All children should know they are valued and contribute to the life of our school.



Exceptional Behaviour

Our children are very well behaved as a consequence of excellent role models, a consistent approach and praising good behaviour.

We have many reward systems to build self-esteem, self-worth and aspirations. These include:

- Stickers
- Values Certificates
- Herne Hero
- Class Dojos
- Class Rewards
- Visiting Pixie

Our children feel safe and secure at school. Our staff understand the development of very young children and are knowledgeable about how to effectively resolve issues that may arise. This is always done in a calm manner where staff listen and support children to achieve positive outcomes and make good choices.

‘The school have worked tirelessly to make sure my daughter is included in all aspects of school life. I am forever grateful’

Our Curriculum – Creativity and Connections



Our curriculum is divided into two stages

Nursery and Reception – Early Years Foundation Stage (EYFS)
Years 1 and 2 – Key Stage 1 (KS1) National Curriculum

The **EYFS Curriculum** is based on seven areas of learning

- Personal, Social and Emotional Development
- Communication and Language
- Physical Development
- Literacy
- Maths
- Understanding of the world
- Expressive Arts and Design

The **KS1 curriculum** covers the following areas

- English – Reading, Writing, Phonics, Speaking and Listening
- Maths – Number and Calculation, Shape, Space and Measures, Data Handling
- Computing including e-safety
- Creative Arts – Art and Design, Music, PE, Design Technology
- Personal, Social, Health and Emotional Development
- World Knowledge – Science, Geography, History and RE

Themes

Our Curriculum is tailored to our children. We listen to our children and plan themes around their interests.

Flexible Play

Children's playtime is flexible so that staff can enable optimum learning or brain breaks as the children need them.



'The Herne curriculum is rich and child centred. The provision is moulded to each child with thought and care.'

Local Authority Improvement Advisor

Parent School Partnership



Come into School

We work closely with parents and welcome you, as part of our Herne family, to get involved in your child's school life.

Ways to work in partnership include:

- Volunteer helper
- School Governor
- Special Worship
- Workshops
- Come and See afternoons
- Family Picnic
- Performances
- Church Services
- School Trips

Sharing information

Annually we invite you to two face to face parent consultations and you will receive a personalised report at the end of the year.

Key information can be shared between home and school at the beginning and the end of the day or at a bespoke meeting with you.

Visit our school

If you would like to visit our school with a view to your child attending Herne Infants please call our school office 01227740793 or email office@herne-infant.kent.sch.uk to arrange this.

